



**RECURRING
BILLING**



RECURRING BILLING



RECURRING PAYMENTS ARE CONVENIENT FOR CUSTOMERS.

They offer significant advantages for merchants too. Help simplify the payment process while increasing cash flow and reducing overall costs to capture payments.

It is a simple and effective way to increase billing efficiency.

This is a tool used for submitting and managing recurring, or subscription based transactions. Completely customizable, it reduces costs with manual transactions, and helps enhance loyalty for your brand. Keep your processing & billing **SIMPLE** with recurring billing.

RECURRING TYPES INCLUDE:

Traditional Recurring – Merchant is setup and bills a single cardholder via CC or ACH (e-check) on a specific day for an indefinite or specified amount of time.





MODIFIERS:

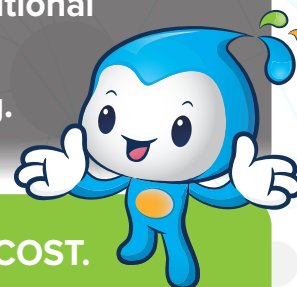


ADD-ON – SUPPLEMENTAL AMOUNT TO A PRIMARY CHARGE.

EXAMPLE:

Charge \$10 a month for a gym membership with an additional \$5 per month for use of the pool.

You can create as many 'add-ons' or additional recurring.



DISCOUNTS – DEDUCTION FROM THE USUAL COST.

EXAMPLE:

Sign up for recurring billing and save 10% monthly on your sock subscription. Or you can give a straight cost break.

EXAMPLE \$12.99 to \$10.99

SANDBOX MODE

- Dashboard
- Virtual Terminal
- Reporting
- Invoices
- Shopping
- Customer Vault
- Recurring Billing
- Plans
- Addons
- Discounts
- Subscriptions
- History
- Billing
- File Batch
- Manage
- Settings
- Help

Recurring Plans

Create New Plan						
Action	Name	Amount	Frequency	Interval	# of Subscriptions	
...	Gym Plan	\$8.00 + \$0.08 - \$0.01	monthly	1	13	
...	Personal Training	\$1.00 + \$10.00 - \$0.00	monthly	1	0	
...	Test Plan	\$0.10 + \$0.00 - \$0.00	monthly	2	0	
...	Tanning	\$3.00 + \$0.00 - \$0.00	monthly	1	1	
...	Cleaning Service	\$50.00 + \$0.00 - \$0.00	monthly	1	0	
...	Daily Dog Walking	\$300.00 + \$0.00 - \$0.00	monthly	2	0	
...	2x a Month	\$50.00 + \$0.00 - \$0.00	twice_monthly	1	0	
...	Monthly - 2x Every 2 Months	\$50.00 + \$0.00 - \$0.00	twice_monthly	2	0	
...	Monthly	\$50.00 + \$0.00 - \$0.00	monthly	1	0	
...	Lawn Maintenance	\$100.00 + \$0.00 - \$0.00	monthly	1	2	
...	Gym Membership Gold	\$50.00 + \$0.00 - \$0.00	monthly	1	0	
...	Osch Test	\$17.00 + \$2.00 - \$0.00	monthly	1	0	
...	Every Friday	\$10.00 + \$0.00 - \$0.00	daily	1	1	
...	Nick Test	\$15.00 + \$5.00 - \$1.00	monthly	1	0	
...	test2	\$100.00 + \$10.00 - \$0.00	monthly	1	0	